

CUBE Panel

Windows installation process



End users Guide to **CUBE PANEL**.

The software described in the following document is granted by means of a license agreement and can only be used accepting all the terms of said agreement.

Copyright

© **2007 Biztology S.L.** All rights reserved.

The content of this document and the software described in it cannot be copied, reproduced, translated or reduced by any means or electronic or other device without the prior written consent of **Biztology S.L.**, Plaza de Alonso Martínez nº 2 3º Izq. 28004 Madrid, Spain.

Installation language

The first window of the installation program will ask you to select the language to install Cube Panel in, as shown in [Figure 1](#).

By default, this window is shown in English.

Once you have selected the language, press "Ok"

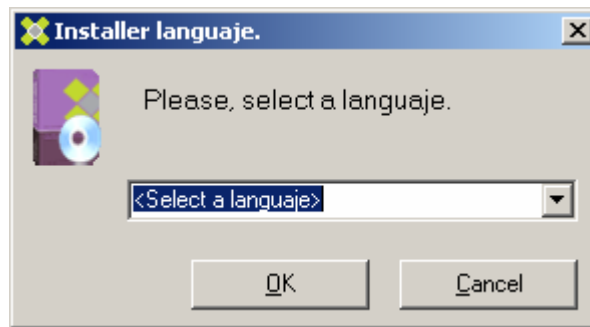


Fig. 1. Installation language.

Welcome window

Once you have selected the language of the installation, the welcome window will appear as shown in [Figure 2](#).

Press "Next >" to continue.

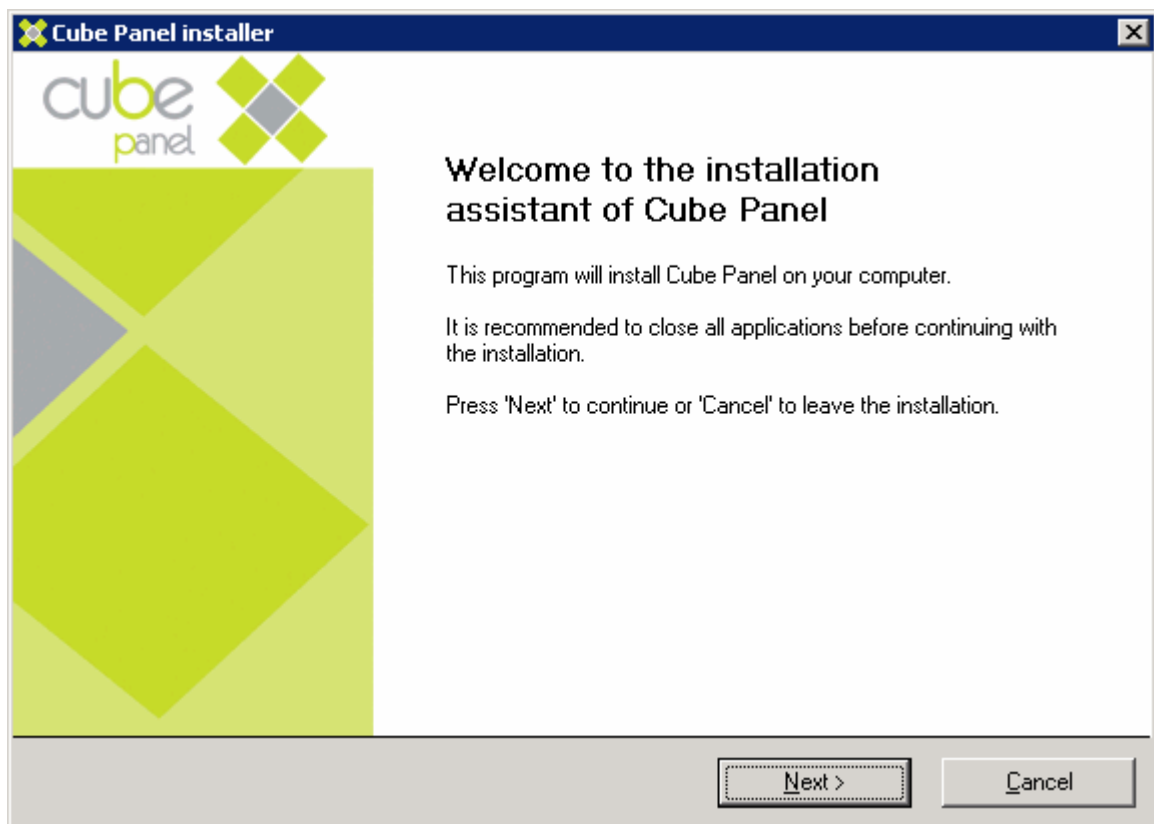


Fig. 2. Welcome window.

License agreement

The next window is the license agreement (Figure 3). If you agree with the license select "I accept the license". To continue with the installation press "Next >".

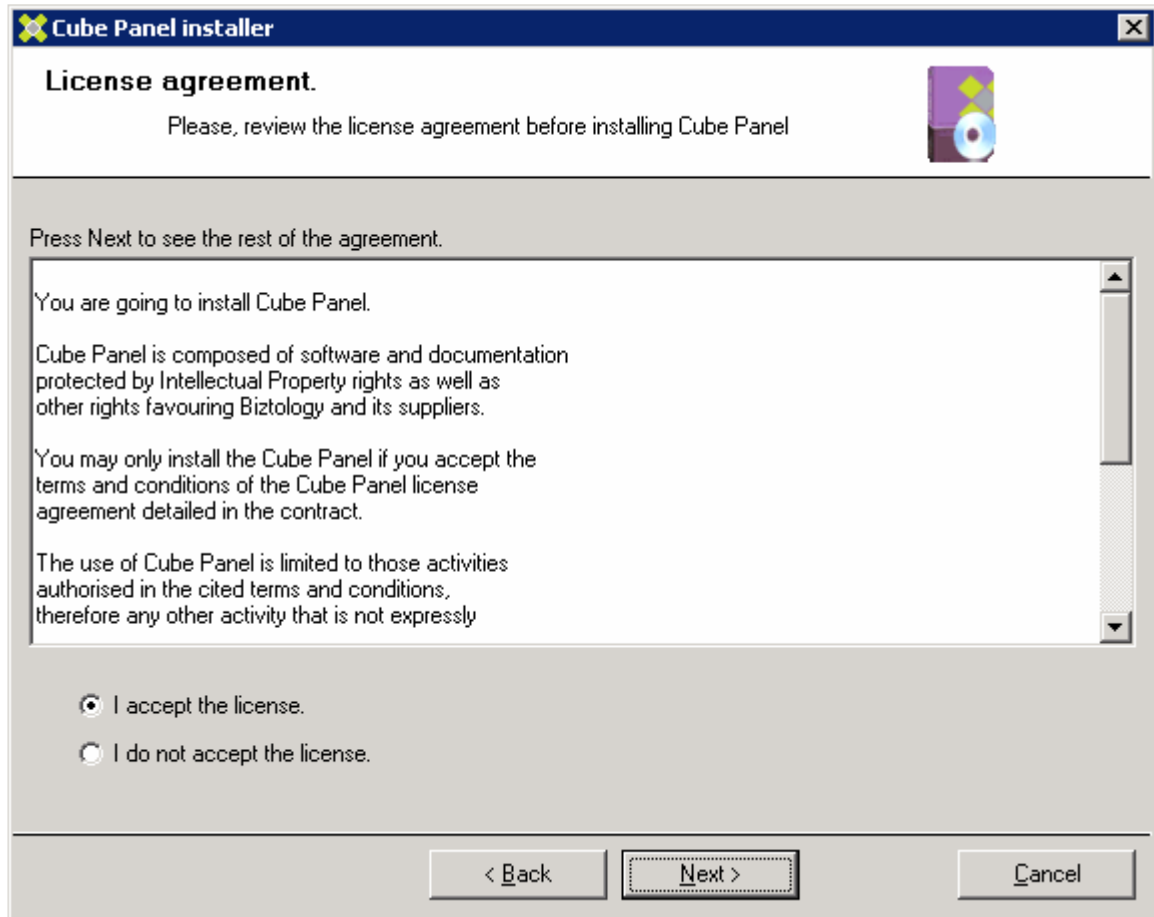


Fig. 3. License agreement.

Requirements and packages to install

The window for requirements and packages to install (Figure 4) gives you information about what you have already installed and about what Cube Panel requires for a correct installation.

Cube Panel requires the following programs to be installed in your system:

- **MySQL.** You can download it from the official MySQL site: <http://dev.mysql.com/downloads/index.html>
It is recommended that you install "mysql-essential-4.1.20-win32.msi", you can download it from:
<http://dev.mysql.com/downloads/mysql/4.1.html>
<http://dev.mysql.com/get/Downloads/MySQL-4.1/mysql-essential-4.1.20-win32.msi/from/pick>
- **ActivePerl.** You can download it from the ActiveState website: <http://downloads.activestate.com/ActivePerl/Windows/5.8/ActivePerl-5.8.4.810-MSWin32-x86.msi>. We recommend the installation of "ActivePerl-5.8.4.810-MSWin32-x86.msi"

- **PostgreSQL 8.2.** You can download it from <http://www.postgresql.org/ftp/binary/v8.2.5/win32/> . We recommend installation of 'postgresql-8.2.5-1.zip'.
- **Microsoft .NET Framework 2.0**
- **Service Pack 1 (SP1)**
- **IIS – WWW Service.**
- **IIS – FTP Service.**
- **Frontpage extensions.**
- **ASP.NET**

In this step you will find out if your system fulfils the requirements and also what packages Cube Panel will install by default. If you have already installed some of the packages that Cube Panel installs by default, you will be asked to uninstall them first to continue with the installation.

Once everything is correct, press "Next >" to continue.

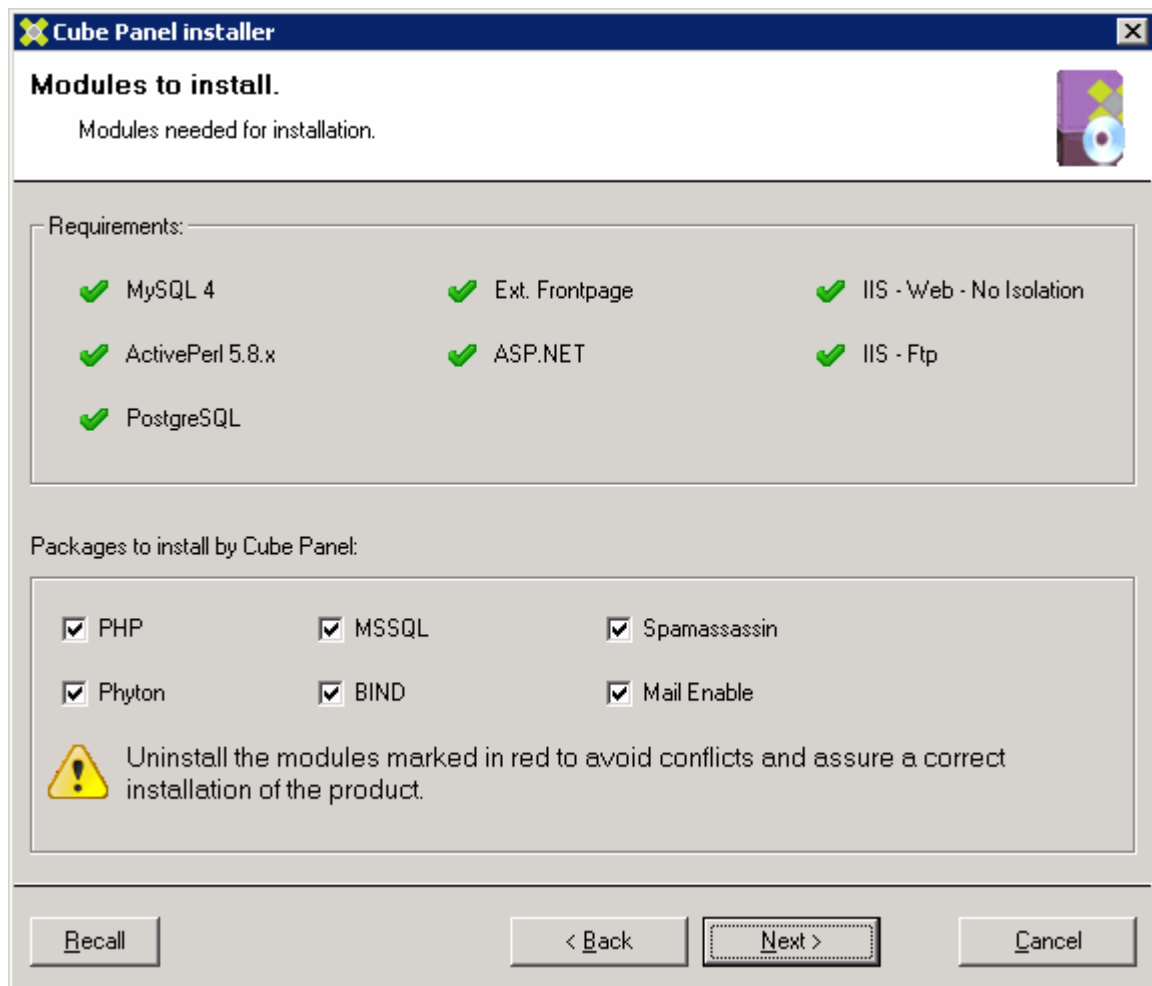


Fig. 4. Requirements and packages to install.

Configuration data

The next window will ask you some configuration data for Cube Panel ([Figure 5](#)).

You have to select an IP from those of your system.

You can change the name of your machine as far as Cube Panel is concerned.

You have to write the password you want to have for the administrator of the Microsoft Server Data Engine (MSDE) during the installation process.
 You have to write the root password you gave during the MySQL installation.
 You have to choose a password for the administrator (admin) of Cube Panel.
 The email of the administrator is also required.
 You have to select a destination folder for the installation of Cube Panel and a destination folder where the Cube Panel websites will be located.

Once the form is complete and correct, press "Next >" to continue with the installation.

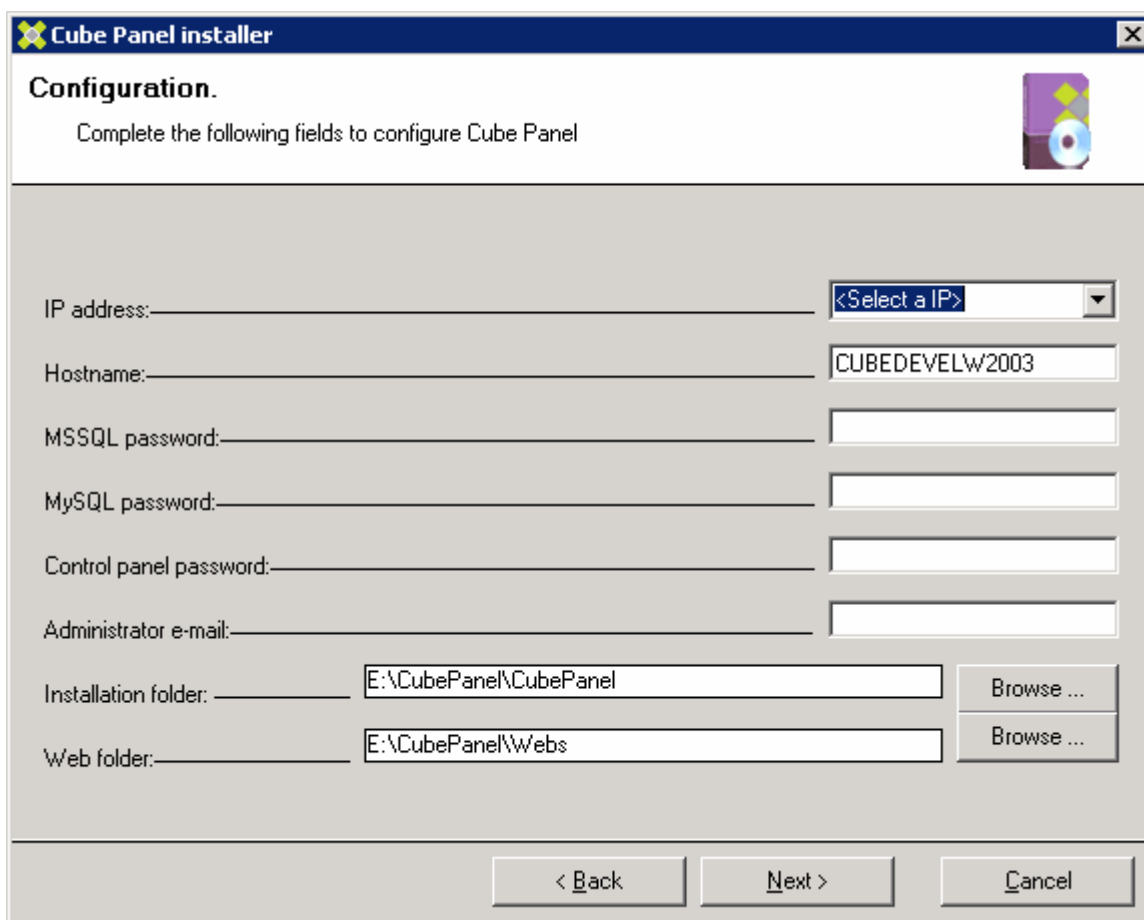


Fig. 5. Configuration data.

Final information and installation process

The last window shows the information that will be used to install Cube Panel. If you do not agree press "< Back" and change the data you consider necessary.
 Once you are sure of the installation data, please, press "Install".
 During the installation process, you will be informed about its status.

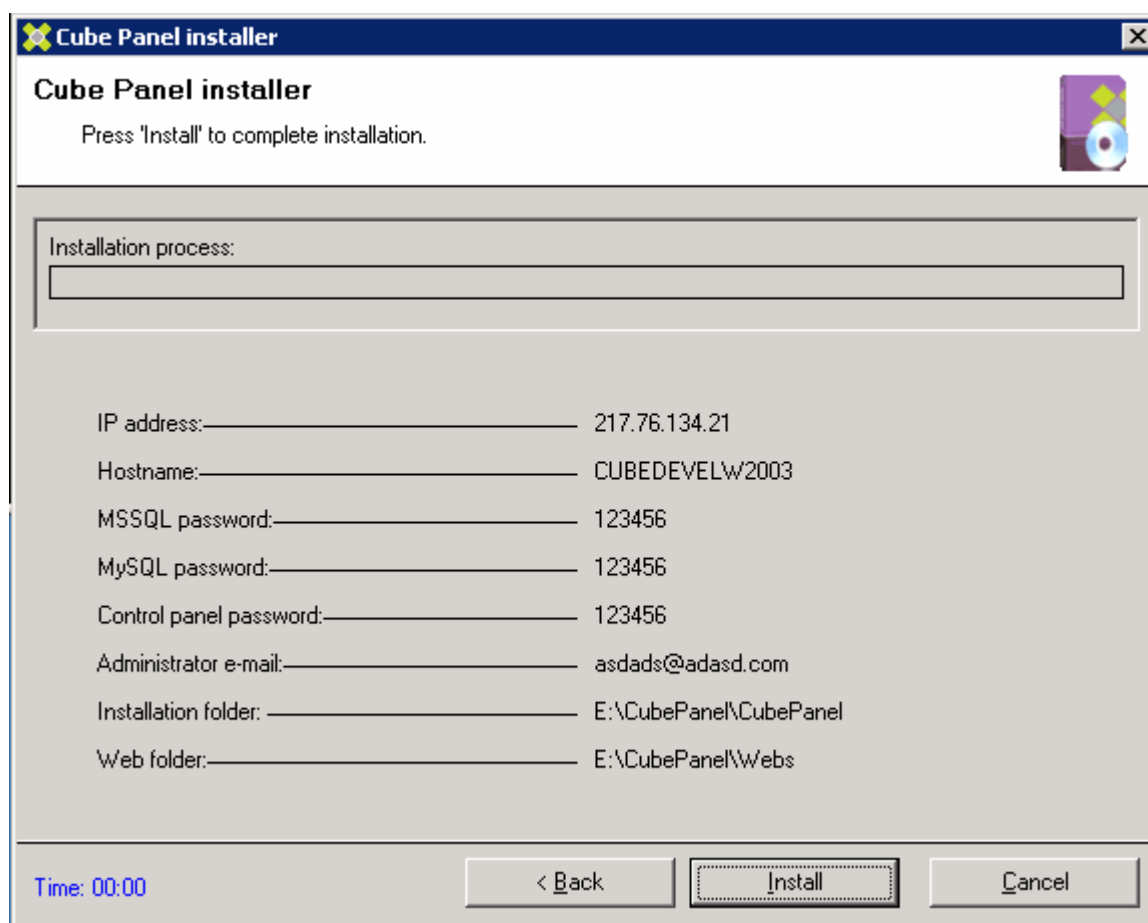


Fig. 6. Final information and process installation.

Access to Cube Panel

After the installation of Cube Panel, you can access the program to administer your server from any browser with the URL:

https://SERVER_IP:8443

where *SERVER_IP* is the IP indicated during the installation process.

- At this address you will be asked for a user name and a password.
- To access as administrator, use "admin" as username and password specified during the installation process. If required, you can change these settings from the application.
- Once you have added your clients and domains, they can access using the previous URL with their own data (client name or domain and password). Each type of user (client or domain) will manage only the options he has available.